

**Modular Cooking Range Line**  
**thermaline 80 - 600mm Passth. Electric**  
**Warming Cabinet, 2 doors, GN conform,**  
**2 Sides(H2)-H=550**

ITEM # \_\_\_\_\_

MODEL # \_\_\_\_\_

NAME # \_\_\_\_\_

SIS # \_\_\_\_\_

AIA # \_\_\_\_\_



**588318 (MA4JDCFOAO)**

Passthrough electric  
 Warming Cabinet, with 2  
 doors, two-side operated,  
 GN - H2

### Short Form Specification

**Item No.** \_\_\_\_\_

600 mm wide passthrough warming cabinet with 2 doors. Internal frame for heavy duty sturdiness in stainless steel. Flat surface construction, easily cleanable. Temperature in the cabinet can be set through thermostat, up to a maximum of 110 ° C. Cabinet storage space accepts GN 1/1 containers. IPX5 water resistant certification. Configuration: Two-side operated freestanding base, hygienic class H2.

### Main Features

- All major components may be easily accessed from the front.
- THERMODUL connection system creates a seamless work top when units are connected to each other thus avoiding soil penetrating vital components and facilitating the removal of units in case of replacement or service.
- Unit constructed according to DIN 18860\_2 with 70 mm recessed plinth.
- Temperature in the cupboard can be set through a thermostat to suit different requirements. The maximum temperature is 110°C.
- Unit can be installed below modular top appliances, designed to keep plates warm.

### Construction

- IPX5 water resistance certification.
- 2 mm top in 1.4301 (AISI 304).
- Flat surface construction with minimal hidden areas to easily clean all surfaces
- Storage space in the base of the appliance accepts GN1/1 containers.
- Internal frame for heavy duty sturdiness in stainless steel.

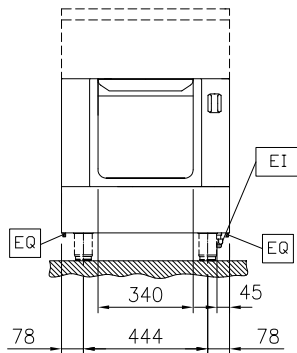
**APPROVAL:** \_\_\_\_\_



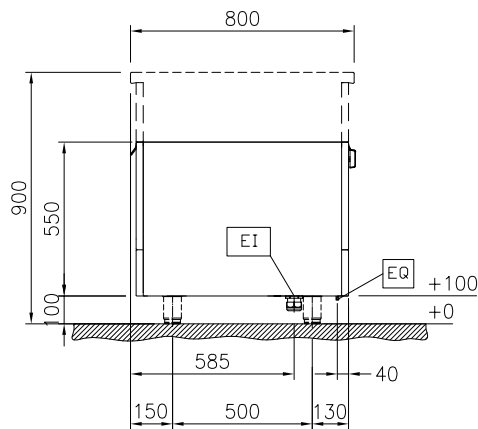
**Electrolux**  
PROFESSIONAL

Modular Cooking Range Line  
thermaline 80 - 600mm Passth. Electric  
Warming Cabinet, 2 doors, GN conform, 2  
Sides(H2)-H=550

Front

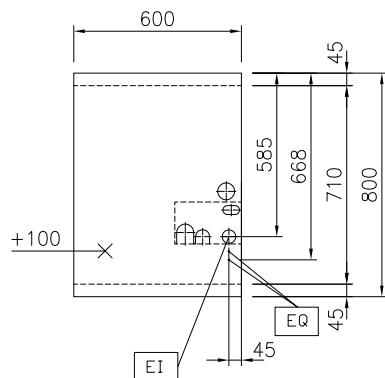


Side



EI = Electrical inlet (power)

Top



### Key Information:

External dimensions, Width:	
588318 (MA4JDCFOAO)	600 mm
External dimensions, Depth:	800 mm
External dimensions, Height:	550 mm
Cupboard Cavity Dimensions (width):	340 mm
Cupboard Cavity Dimensions (height):	330 mm
Cupboard Cavity Dimensions (depth):	710 mm
Cabinet temperature range:	30-110 °C
Net weight:	28 kg

### Sustainability

Current consumption:	2.5 Amps
----------------------	----------



Modular Cooking Range Line  
thermaline 80 - 600mm Passth. Electric Warming Cabinet, 2 doors, GN  
conform, 2 Sides(H2)-H=550  
The company reserves the right to make modifications to the products  
without prior notice. All information correct at time of printing.

2025.05.26

## Optional Accessories

- Stainless steel side panel, 800x800mm, freestanding PNC 912508 ☐
- Stainless steel front kicking strip, 600mm width PNC 912596 ☐
- Stainless steel side kicking strips left and right, freestanding, 800mm width PNC 912619 ☐
- Stainless steel plinth, freestanding, 600mm width PNC 912823 ☐
- Perforated shelf for warming cabinets and cupboard bases (one-side operated TL80-85-90 and two-side operated for TL80) PNC 913233 ☐
- Energy optimizer kit 14A - factory fitted PNC 913244 ☐
- Side reinforced panel only in combination with side shelf, for freestanding units PNC 913257 ☐
- Shelf fixation for TL80-85-90 one-side operated, TL80 two-side operated PNC 913279 ☐
- Electric mains switch 25A 4mm<sup>2</sup> NM for modular H800 electric units (factory fitted) PNC 913676 ☐